



ESCOLA
SUPERIOR
DE SAÚDE
CRUZ
VERMELHA
PORTUGUESA

HEI PARTNERS

ERASMUS+
Blended Intensive
Programme

ADVANCED
CRITICAL
CARE

June 2025





Content

ERASMUS+ Blended Intensive Programme

Advanced Critical Care

Introduction Main Goal	3
Duration and credits	4
Number of places available	4
Application	4
Contacts	5
Structure and Learning Outcomes	5
Assessment	6
Venue and Practical sessions	7
Accommodation	8
Food and Beverages	9
Quality Assurance and Continuous Improvement	9





ERASMUS+ Blended Intensive Programme

Advanced Critical Care

ID: 2023-1-PT01-KA131-HED-000138141-2

Introduction | Main Goal

This BIP is a comprehensive program integrating trauma based on International Trauma Life Support (ITLS) provider course, covering the skills necessary for rapid assessment, resuscitation, stabilization and transport of a trauma victim. ITLS was founded in the early 1980s by John E. Campbell, MD, FACEP, of the Alabama Chapter of the American College of Emergency Physicians, aimed at health/medical and nursing students.





Duration and credits

- + The international module is validated with 3 ECTS-credits.
- + The online component is 8 hours of workload (hosted on GoogleMeets platform) and will be held in the first week of June (exact dates to be confirmed).
- + The intensive in-person programme is 40 hours of contact and will be held from 30 June to 4 July, 5 full days (from 9 to 13h and 14-18h).

All participants receive a 'transcript of records' at the end of the course. The certificate will provide ECTS-credits, grades and description of the modules. Students can transfer the credits to their curriculum or can add this to their portfolio.

Participants are expected to follow all educational activities and to participate in practical activities. The presence in all lectures or workshops (100%) is required for certification.

Number of places available

A minimum number of 15 international participants and a maximum of 20 is required, to guarantee the success of the educational strategies considering the capacity of the facilities and human resources. Students should undergo a selection procedure at their home institutions according to predefined criteria.

Application

Students should apply via their HEI International Office until 9 May 2025.

It is advisable that external STAFF can apply to support educational activities. Remaining issues related to application should be addressed to BIP and International Office Coordinators.





Contacts

For more details regarding the program please contact:

BIP Coordinator: Prof. Paulo Santos (psantos@esscvp.eu)

International Coordinator: Prof. Filipe Moura (international.lisboa@esscvp.eu)

Structure and Learning Outcomes

The online part will cover the following topics (8h):

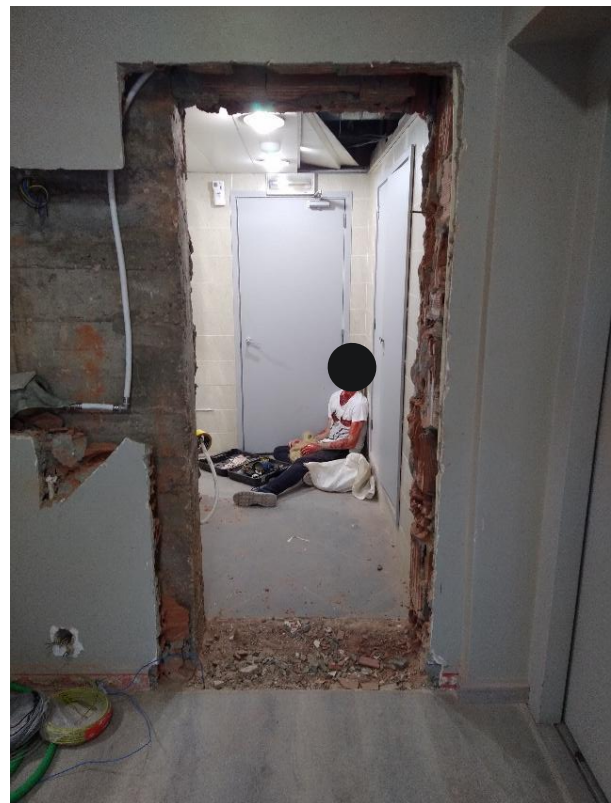
- + Standard Precautions and Transmission-Based Precautions
- + Scene Size-up
- + Trauma in Pregnancy
- + Paediatric Trauma
- + Geriatric Trauma

The Intensive part will address the following topics (40h):

- + Introduction to Traumatic Disease
- + Trauma assessment and management
- + Airway Management and Capnography
- + Shock and haemorrhage control
- + Head and Spinal Trauma
- + Thoracic and Abdominal Trauma
- + Burns
- + Trauma Arrest
- + The Impaired Patient
- + Focused Assessment with Sonography in Trauma
- + Leadership and task allocation within a trauma team
 - o Responsibilities of a trauma team member
 - o Communication Skills within the team and non-team members
 - o Prioritizing in the multi-trauma patient
- + Decision-making under pressure

For the practical setting, it will be provided the following Skill stations:

- + Thoracic trauma skills
- + Airway approach skills
- + Shock and haemorrhage control skills (IO access/fluid therapy)
- + Spine management skills
- + Patient assessment demonstration
- + FAST and eFAST
- + Patient Assessment Practice Scenarios



Assessment

Students will be assessed at the end of the theoretical component, through a practical case-based scenario applied during the intensive week. The lectured topics will be assessed individually by a written test.

Venue and practical sessions

- + ESS CVP Lisboa facilities (Free Wi-Fi available)
- + CrossSIM Health Centre - Simulation Laboratories (6th floor)



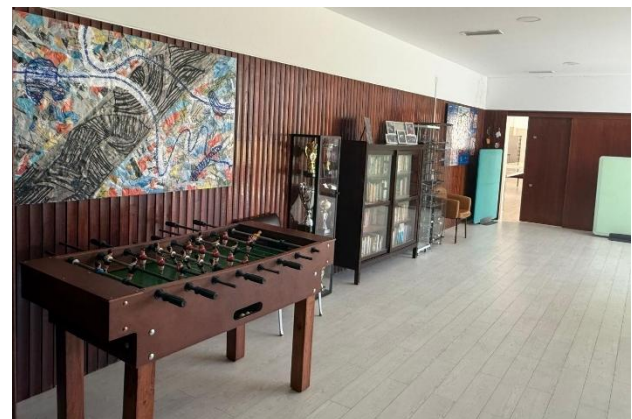
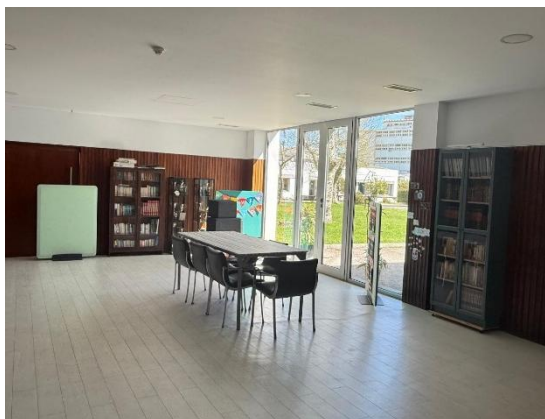
Food and Beverages

During the course, lunch/snacks and beverages can be purchased at **ESSCVP Lisboa** cafeteria/restaurant (1st floor). The lunch break will be from 13.00 to 14.00.



Accommodation

ESS CVP Lisboa provides accommodation at Red Cross Military House (RCMH) under request. The RCMH has a total capacity for 20 BIP students. Accommodation at the RCMH will cost 50 euros per day, with regular breakfast provided after 7.30 AM. Free Wi-Fi available.





Quality Assurance and Continuous Improvement

The quality assurance of the course will be provided using following mechanisms:

1. Survey regarding the course content, teaching methodologies & assessment approaches.
2. Impact of the course towards the development of new skills and intercultural competences.
3. Renewal and strengthening of partnerships, networking.

A report will be written with the analysis of these results and made available for partners and management structures. Each year this report will be discussed amongst the teachers' team, to introduce the necessary changes for continuous quality improvement.

WELCOME TO ESSCVP LISBOA!



